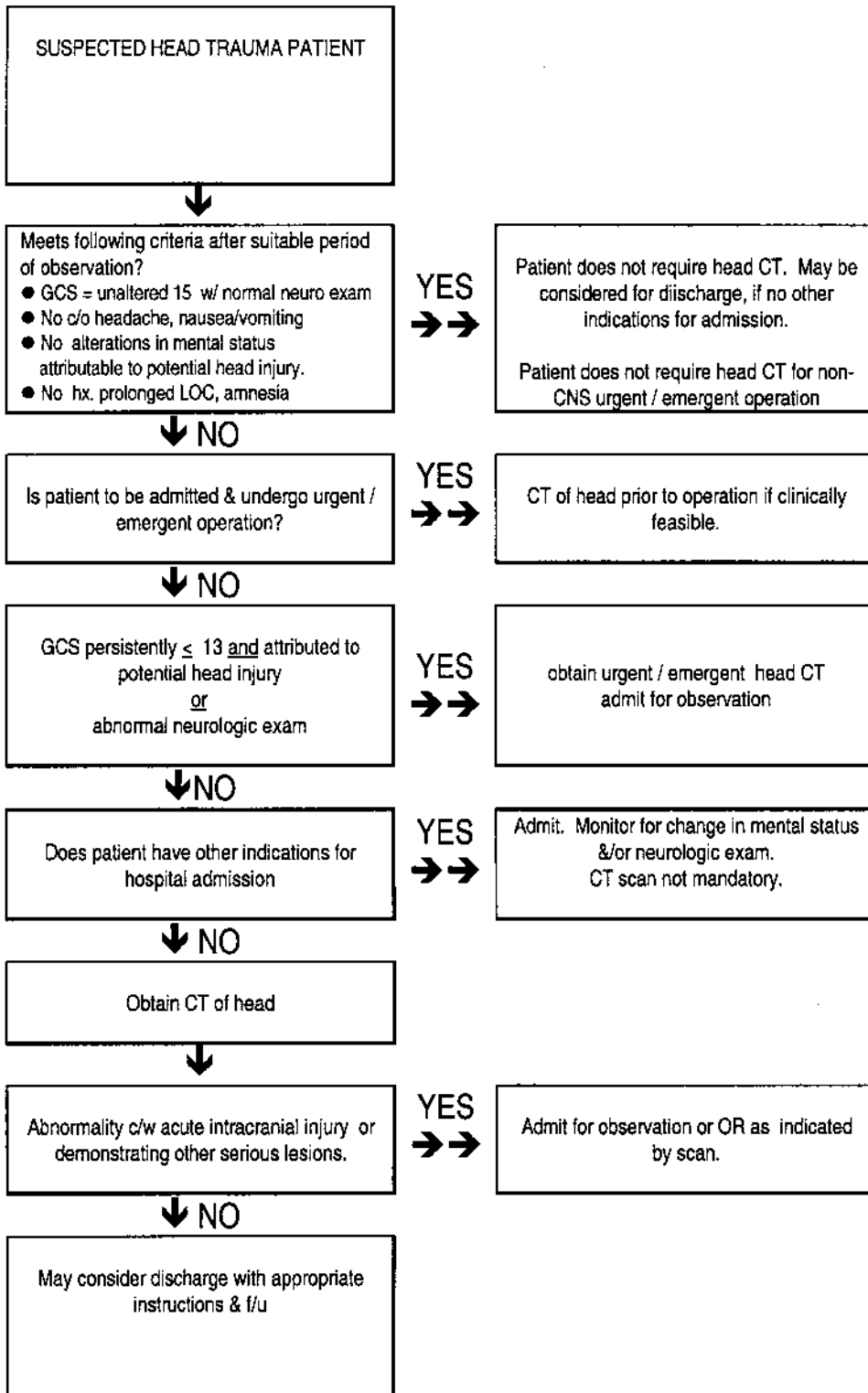


## COMMENTS



Head trauma may be suspected on the basis of mechanism and any of the following:

- abnormal mental status/behavior
- abnormal neurologic exam
- hx. LOC, amnesia
- physical evidence of head trauma

### MANAGEMENT ALGORITHM FOR INITIAL EVALUATION OF POTENTIAL HEAD INJURY.